

EGYPTIAN BURIAL ARTIFACTS

Here's what we used...

SCENEARAMA® Items

- Sculpting Kit
- Plaster Cloth
- Small Project Base & Backdrop

Household Items

- Balloon, 7"
- Corrugated Cardboard, 9" x 15"
- Cutting Surface
- Disposable Cup
- Foam Core Board
- Gold Craft Paint
- Hobby Knife
- Masking Tape
- Newspaper
- Pan for Water
- Pencil
- Sandpaper (medium grade)
- Scissors
- Styrofoam Ball, 1 1/2"
- Styrofoam Ball, 2 1/2"

Did you know?

Ancient Egyptians believed the body must be preserved (mummified) upon death to ensure rebirth. Preservation of the body included the removal of the stomach, intestines, liver and lungs, each were mummified and then placed in individual Canopic Jars. Items such as masks, amulets and furniture were placed with the body to provide divine protection and the same earthly luxuries in the afterlife.

Fun Fact!

Because the cobra was such a threatening creature in Egypt, the cobra symbol (uraeus) represented a powerful kingship.



1

- Blow up balloon and tie a knot. (Have an adult help you with this step.)

NOTE: Do not blow balloon too full or mask will be too big for *Project Base*.

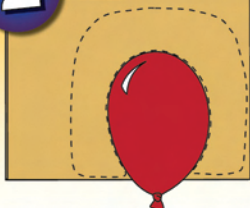
2

Fig. 2a



- Position cardboard behind balloon. Balloon should set below bottom edge of cardboard.
- Trace around balloon and draw a headdress outline.
- Cut out with hobby knife.
- Tape cardboard to balloon. (Fig. 2a)

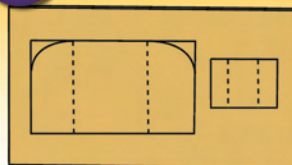
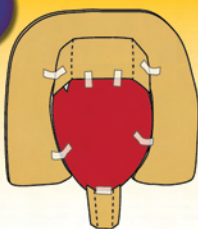
3

Fig. 3a



- Cut a chin beard and front section of headdress out of cardboard.
- Fold at dotted lines. (Fig. 3a)
- Test fit on balloon for proper size.

4

- Use masking tape to attach front portion of headdress and chin beard.

5

i Sculpt

- Using *Sculpting Clay*, sculpt nose, chin, ears, eyebrows and lips.
- Let dry.
- Once dry, use *Project Glue* to attach above pieces to balloon.
- Let dry.

6

Fig. 6a

i Plaster Cloth

- Cover front of mask with 2-3 layers of wet *Plaster Cloth* (3" strips), bumpy side up.
- Smooth each strip with wet fingers so *Cloth* conforms to shape and contours.
- Overlap edges of cardboard pad headdress by 1/2". (Fig. 6a)
- Do not cover back of balloon with *Plaster Cloth*.

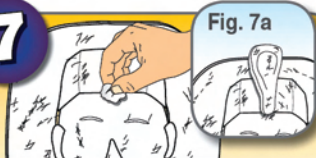
7

Fig. 7a

- Using wet *Plaster Cloth*, create a serpent for the headdress.
- Wad a piece of wet *Plaster Cloth* and place it on the headdress.
- Carefully press serpent onto wet *Plaster Cloth*. (Fig. 7a)
- Allow to set overnight or until hardened.

TIP! A fan will speed up drying time.

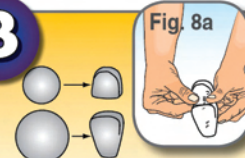
8

Fig. 8a

- Using a hobby knife and/or sandpaper, shape top of canopic jar from small Styrofoam ball and bottom from the larger ball.
- Attach together with *Project Glue*.
- Cover in wet *Plaster Cloth*. (Fig. 8a)
- Let dry.

9

- After *Plaster Cloth* is dry, carefully remove balloon and *Sculpting Clay*, then discard.

10

i Paint

- Before painting, draw desired design on mask with a pencil.
- Paint your mask and canopic jar as desired.
- Let dry.

11

i Project Base & Backdrop

- Design a *Backdrop* that best fits your mask.
- Cut out with a hobby knife.
- Paint front and back of *Backdrop*, as desired.

12

i Easel Templates

- Create an easel using foam core board for your mask.
- Cut out with a hobby knife.
- Paint easel, as desired.

NOTE: Mask can rest on *Backdrop* for extra support.

13

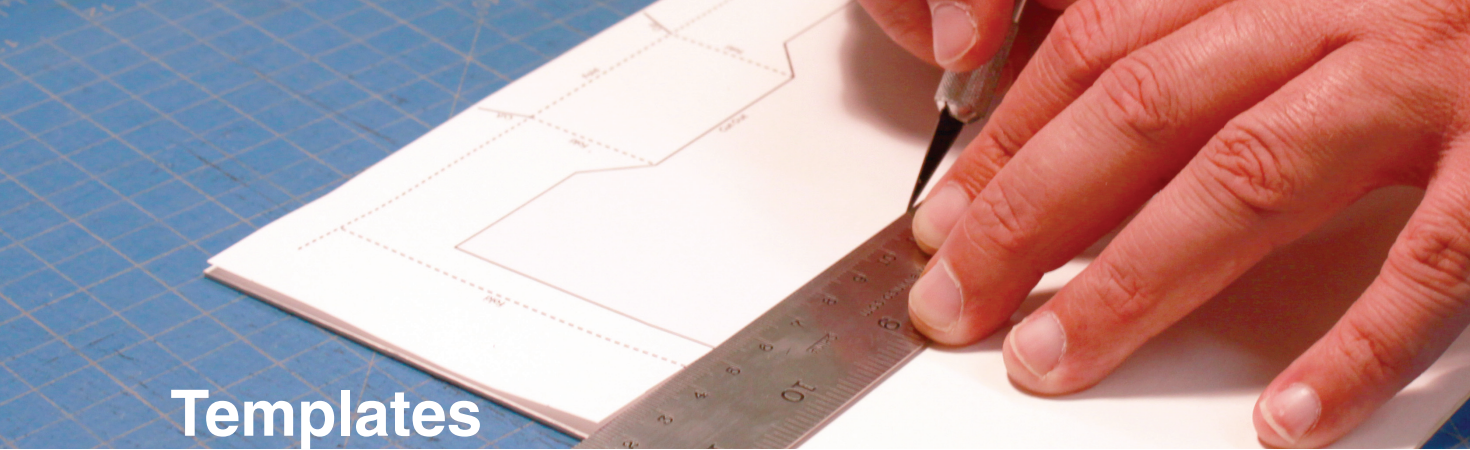
i Contact Gluing Method

- Attach easel to *Project Base* with the contact gluing method.
- Let dry.
- Make sure label area on *Project Base* is facing forward.

14

i Labels

- Glue *Backdrop* and canopic jar to *Project Base*
- Glue mask to easel.
- Label and add signage to your project.



Templates

- Photocopy, trace or scan template onto white paper. Cut out, then trace onto specified material.
- If needed, reduce or enlarge templates to fit your diorama.
- Each template includes basic assembly instructions and needed materials.
- Read through the corresponding project instructions for clarification on using template.
- Short dotted lines ----- indicate fold lines
- Long dotted lines — — — indicate score lines
- Bold, solid lines ————— indicate cut lines

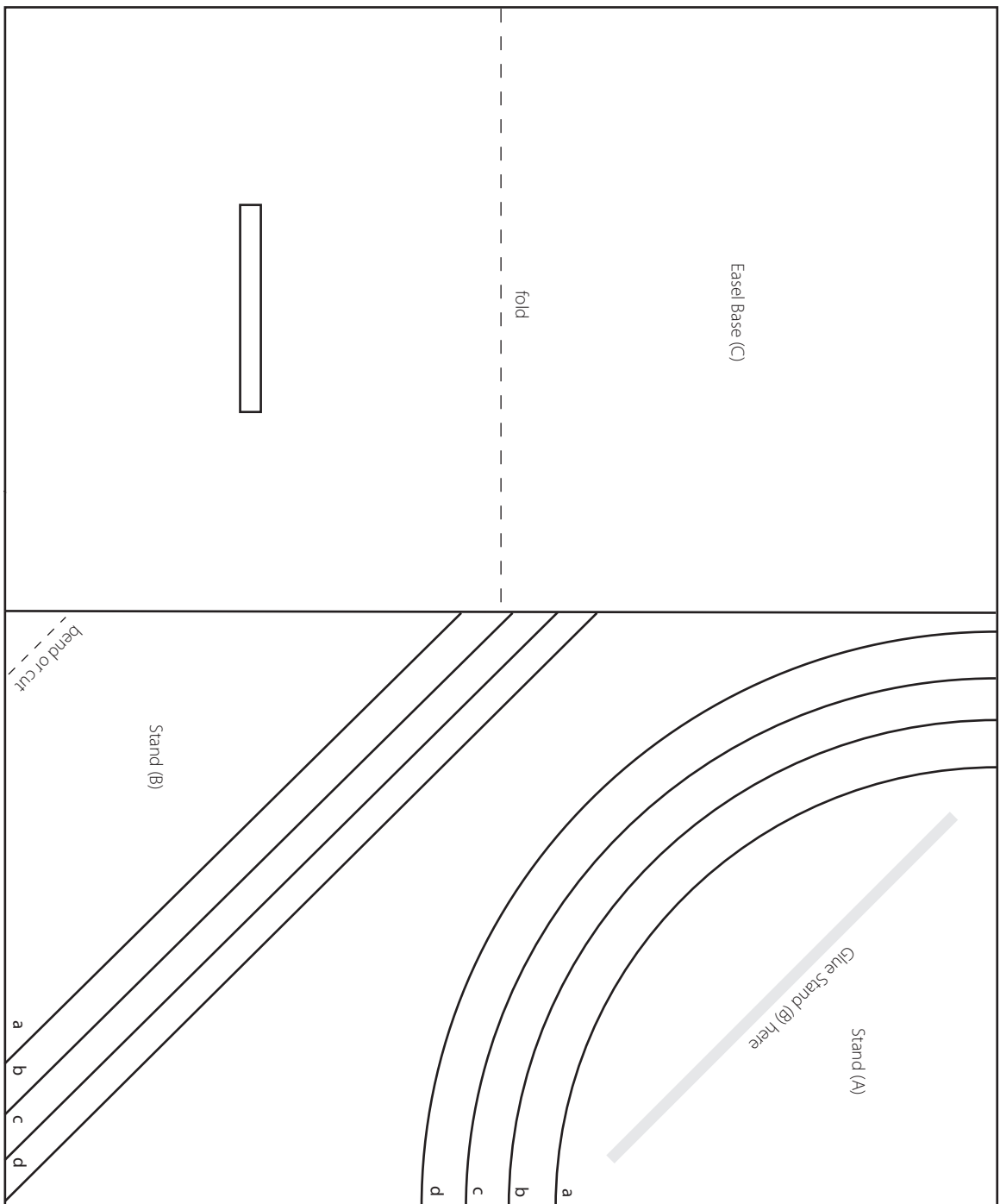
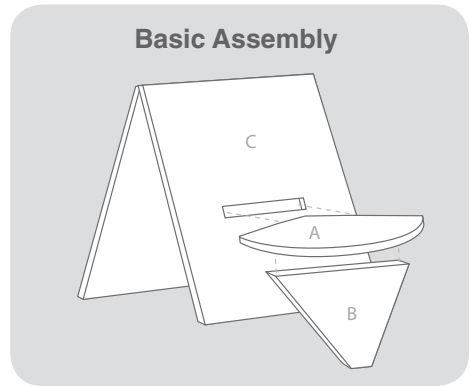
Easel 1

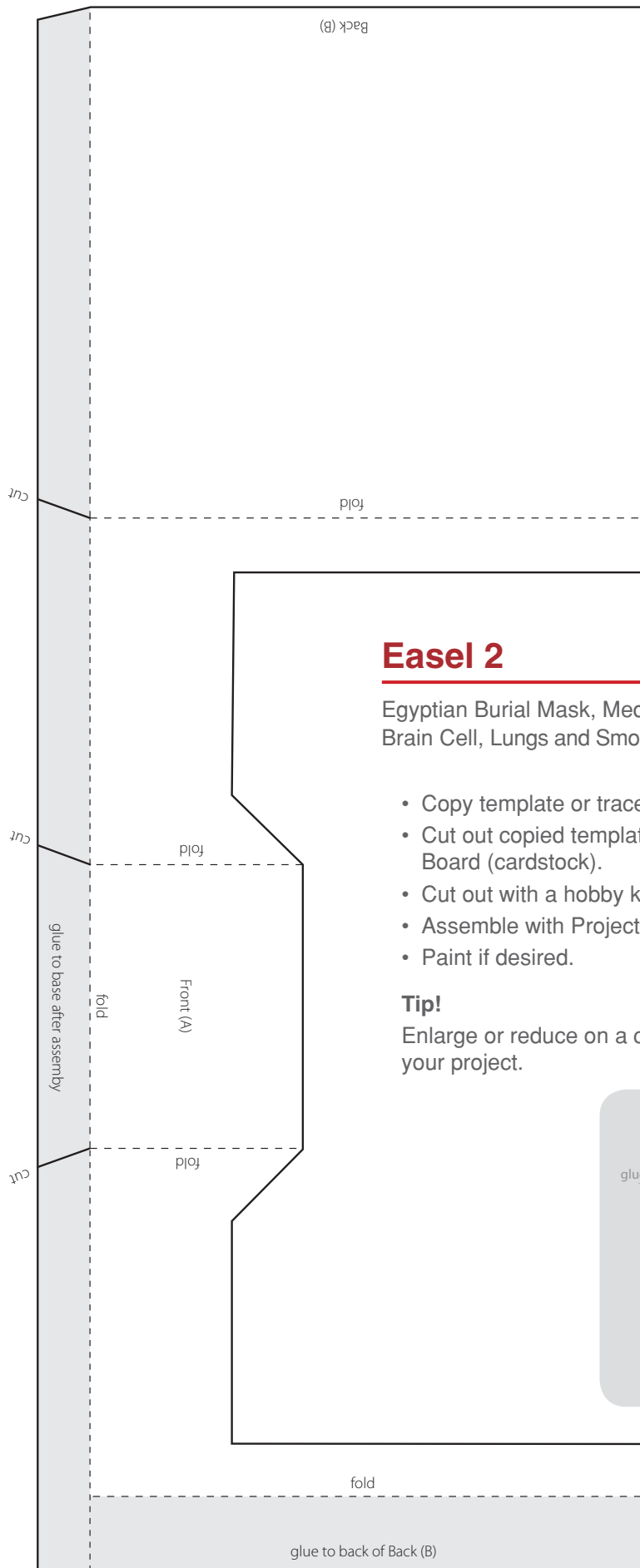
Egyptian Burial Mask, Medusa, Bacteria Cell, Brain Cell, Lungs and Smoking

- Copy template or trace on white paper.
- Cut out copied template and trace on foam core board, 1/8".
- Cut out with a hobby knife.
- Assemble with Project Glue.
- If using cardstock, make size adjustments.

Tip!

Choose the size stand that best fits your project. (a=smallest, d=largest)





Easel 2

Egyptian Burial Mask, Medusa, Bacteria Cell, Brain Cell, Lungs and Smoking

- Copy template or trace on white paper.
- Cut out copied template and trace on Construction Board (cardstock).
- Cut out with a hobby knife.
- Assemble with Project Glue.
- Paint if desired.

Tip!

Enlarge or reduce on a copier to a size that best fits your project.

