

# LANDMARK STRUCTURES®

**O** SCALE  
1:48  
BUILDING KIT

## COUNTRY STORE EXPANSION PF5894

Model the local country store expanding to meet the demand of a growing layout. The positive alignment system ensures a quick, accurate assembly, and the pre-finished edges reduce preparation time. Molded-in detail and scene-setting accessories include clapboard siding, metal roof, screen doors, window treatment options, decals and more!



### MODELING AND CARE INFORMATION

This kit suggests the use of materials that may stain or cause damage. Take care to cover project area and clothing appropriately. Follow recommendations for use and clean up.



### CAUTION

Cutting tools recommended. Use with care.

This item is not a Children's Product and is not intended for use by Children.



**WOODLAND SCENICS®**

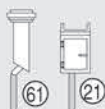
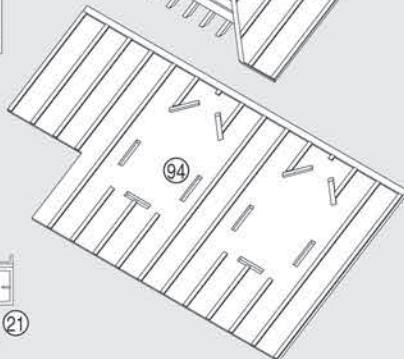
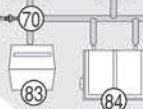
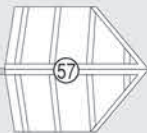
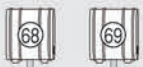
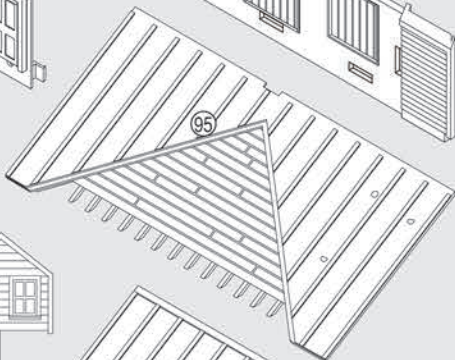
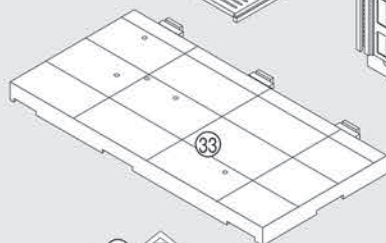
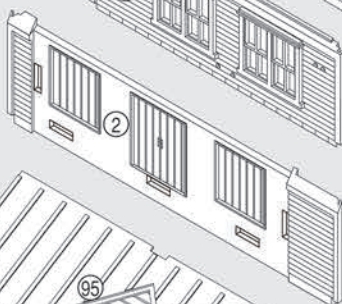
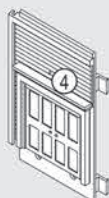
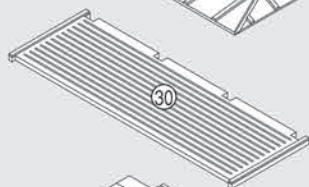
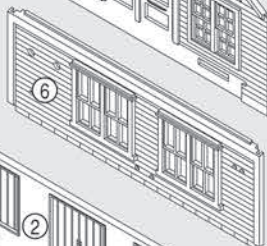
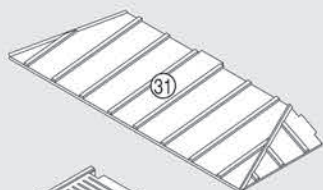
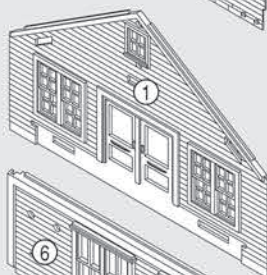
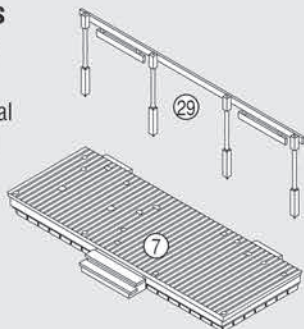
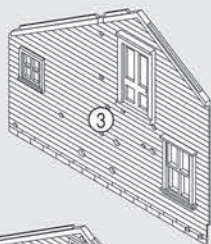
We make every effort to ensure our kits are manufactured complete. However, if this kit is missing a part, please make note of the kit name, number and missing part and contact the Woodland Scenics Sales and Customer Service Department at PO Box 98, Linn Creek, MO 65052, 573-346-5555 or [sales@woodlandscenics.com](mailto:sales@woodlandscenics.com).

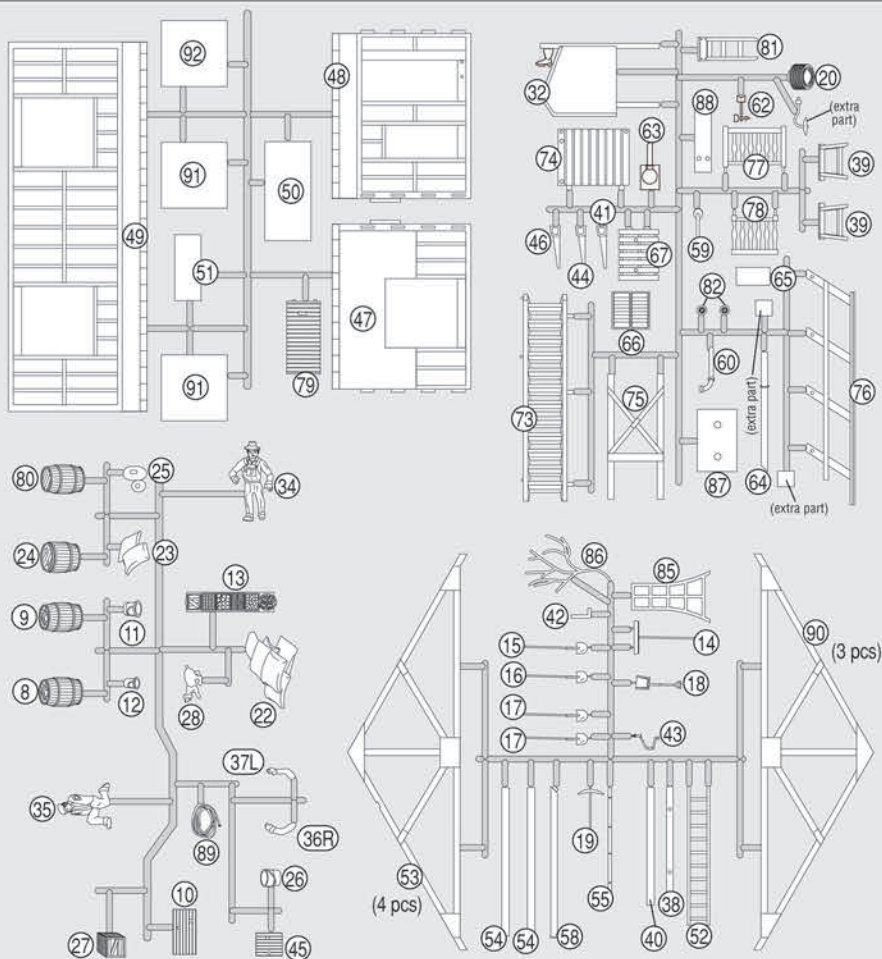
XPF5894INST F5 ©2013 O CO  
Printed by a certified Green Printer

## COUNTRY STORE EXPANSION

### Building Kit Contents

- Wall and Roof Sections
- Sprues with Details
- Printed Window Material
- Clear Window Material
- Dry Transfer Decals
- Door Screen
- Turf for Trellis
- Blackout Paper





## Before You Begin

- Read through instructions.
- Collect additional supplies.
- Check kit contents and verify Details.
- Cover project area with newspaper.

**TIP!** To assist in assembly, refer to exploded-view illustration on back of box.

## Additional Needed Supplies

- |  |   |
|--|---|
| <input type="checkbox"/> Model Glue or Solvent-Based Plastic Cement*   | <input type="checkbox"/> Fine-grade Sandpaper |
| <input type="checkbox"/> Paints (acrylic and/or enamel)*               | <input type="checkbox"/> White Glue           |
| <input type="checkbox"/> Primer*                                       | <input type="checkbox"/> Tweezers             |
| <input type="checkbox"/> Painting Tools                                | <input type="checkbox"/> Scissors             |
| <input type="checkbox"/> Hobby Knife / Flush Cutting Shears            | <input type="checkbox"/> Ruler                |
| <input type="checkbox"/> Cyanoacrylate Adhesive (CA glue / super glue) | <input type="checkbox"/> Newspaper            |

**NOTE:** Allow glue to set before moving to the next step. Plastic cement works by dissolving the surface of plastic and welding parts together. Avoid contact with detail on parts.

\*Contact your local hobby shop for recommendations.



## 1. Prepare Building Parts and Details

- Remove mold flash from Wall Sections, Roof and Details using a hobby knife and sandpaper (**Fig. 1a**). Make sure grooves in Wall Sections are free of mold debris. Do not remove Details from sprues at this time.
- Wash Wall Sections, Roof and Details in warm, soapy water using a mild detergent. Rinse and let dry.
- Details can be left on sprues or removed for priming and painting. Remove using a hobby knife (or flush cutting shears) and sand off parting lines (**Fig. 1b**). Details may be easier to paint on sprue. It also makes identifying them easier during assembly.
- Do not remove placement posts or installation tabs (**Fig. 1c**).

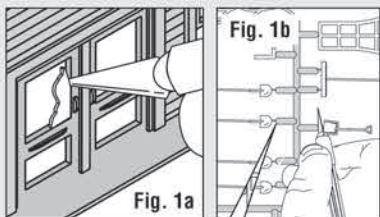


Fig. 1a

Fig. 1b

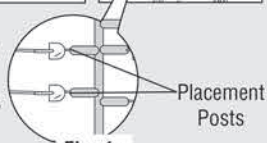


Fig. 1c

## 2. Assemble Building

- Snap Walls ① and ③ firmly into place on Wall ② (**Fig. 2a**).
- Snap Wall ④ onto Wall ③ and Wall ⑤ onto Wall ④ (**Fig. 2b**).
- Snap Wall ⑥ into place on Walls ⑤ and ① (**Fig. 2c**).
- Make sure Walls are firmly snapped into place, aligned and square, then apply glue along inside seams and onto installation tabs.

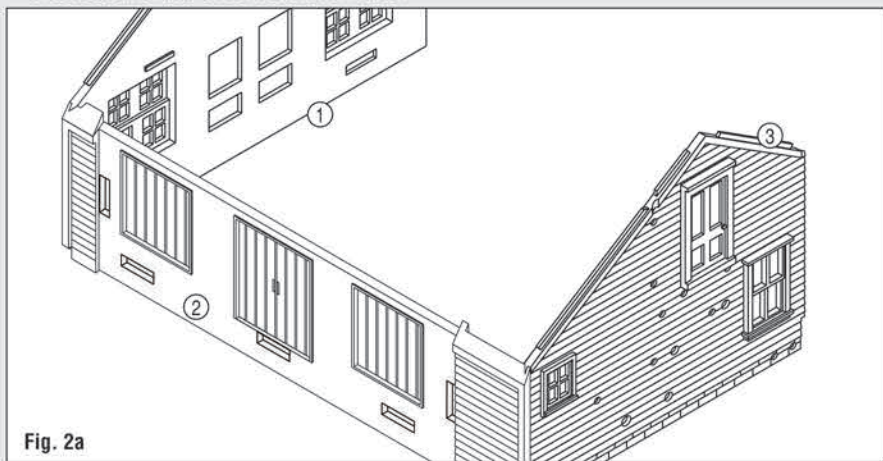


Fig. 2a

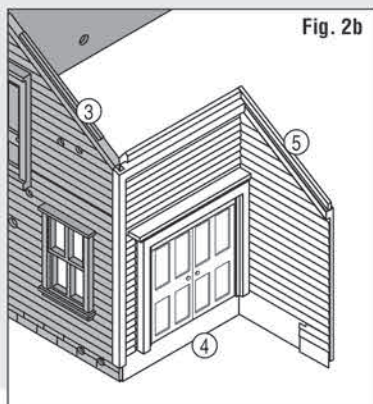


Fig. 2b

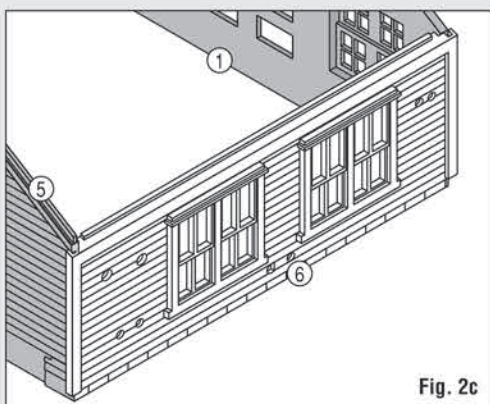


Fig. 2c

### 3. Prime and Paint

Do not prime or paint placement posts.

- Apply a thin coat of primer and let dry.
- Paint as desired and let dry. See Tips & Techniques on pg. 10 for painting tips and weathering techniques.

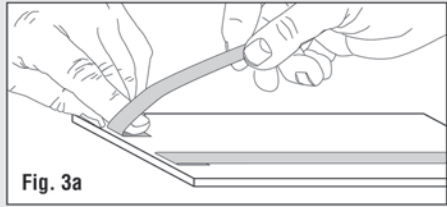


Fig. 3a

**TIP!** To make priming and painting loose Details easier, secure them to strips of masking tape (sticky side up) attached to a piece of cardboard (**Fig. 3a and 3b**).

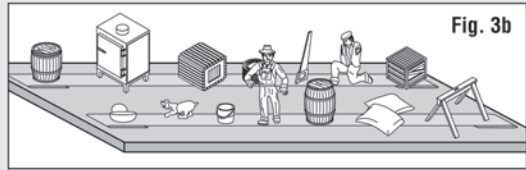


Fig. 3b

### 4. Install Window Material

Position Printed Window Material on inside of Building. Remove protective film before installation. If clear windows are preferred, use Clear Window Material.

- Determine appropriate piece of Window Material for each window opening on inside of Building. Insert into recess of window openings on inside of Building. Dab a tiny amount of glue carefully around edges (**Fig. 4a**).
- Install Window Material in Dormer Windows x2 56 (**Fig. 4b**).
- Glue Door Screen into recess on backside of Front Door (**Fig. 4c**). Trim if necessary.

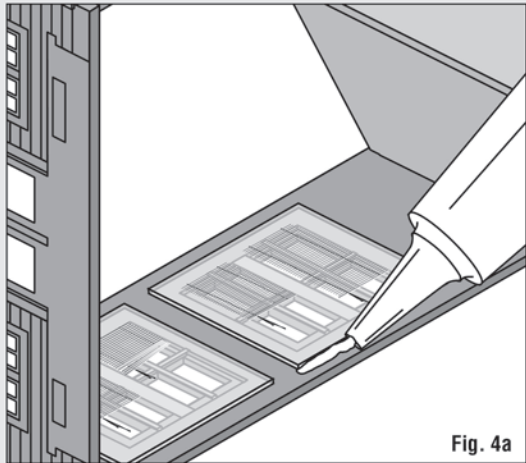


Fig. 4a

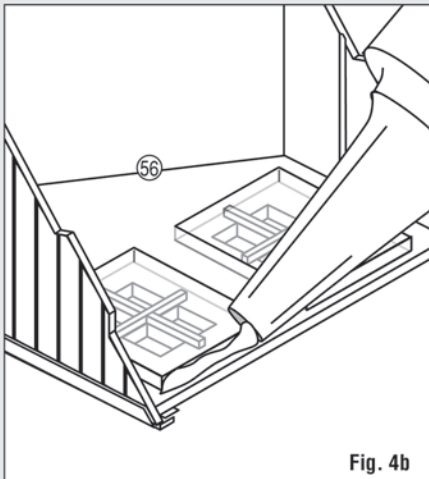


Fig. 4b

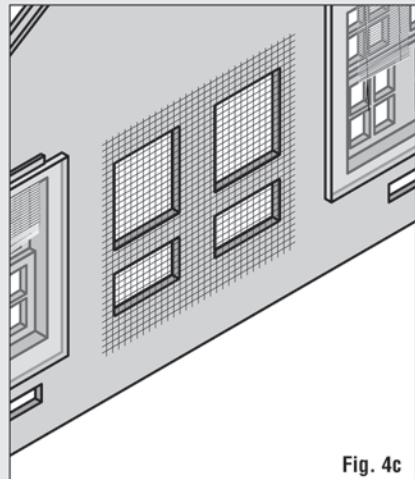


Fig. 4c

## 5. Apply Dry Transfer Decals

Dry Transfer Decals are included for Ice Machine (21), Pile of Sacks (22), 2 Sacks (23), Porch Posts/ Signs Assembly (29), Store Sign (32), Left-side Expansion Frame (47), Door Box (50), Window Box (51), Expansion Trusses x4 (53), Extra Trusses x3 (90), Back Placard (65), Propane Tank Front (72), Dumpster Front (83), Placard (87), Long Placard (88), Loose Window Boxes x2 (91) and Smaller Loose Window Box (92). Before applying Decals to Signs, test fit to confirm proper placement.

- Cut out desired Decal. Avoid handling the back and position in desired location. Rub over entire Decal with a burnisher or dull pencil (Fig. 5a and 5b).
- Lift away carrier sheet carefully. If Decal did not transfer completely, let carrier sheet fall back in place and re-burnish.
- Place backing paper over Decal and burnish again for maximum adhesion.
- If applying onto textured surface, press Decal into texture with a pencil eraser.

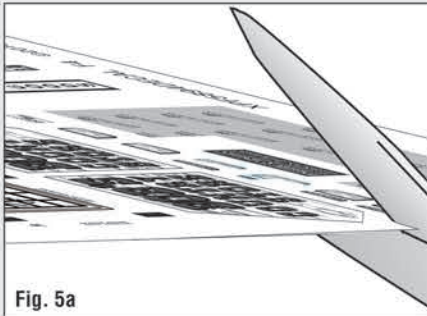


Fig. 5a

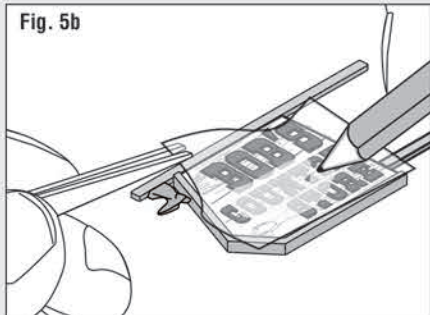


Fig. 5b

**IMPORTANT** Install Details using Cyanoacrylate Adhesive (CA glue / super glue). If Details were left on sprue while painting, remove using a hobby knife (or flush cutting shears). Sand parting lines and touch-up with paint. Most Details have unique placement posts for predetermined locations. Test fit Details before gluing. Place Details without placement posts where desired on layout.

## 6. Front Porch

- Glue Porch (7) to Front Wall (1).
- Attach Bucket 1 (11) and Bucket 2 (12) to Wooden Crate (10). Glue Barrel (8), Wooden Crate Assembly (10,11,12) and Barrel (9) to Porch (7), then attach Crates of Produce (13). (Fig. 6a)
- Attach Broom (14), Shovel (15), Shovel (16), Shovels x2 (17), Spade (18) and Pick Axe (19) (Fig. 6a).

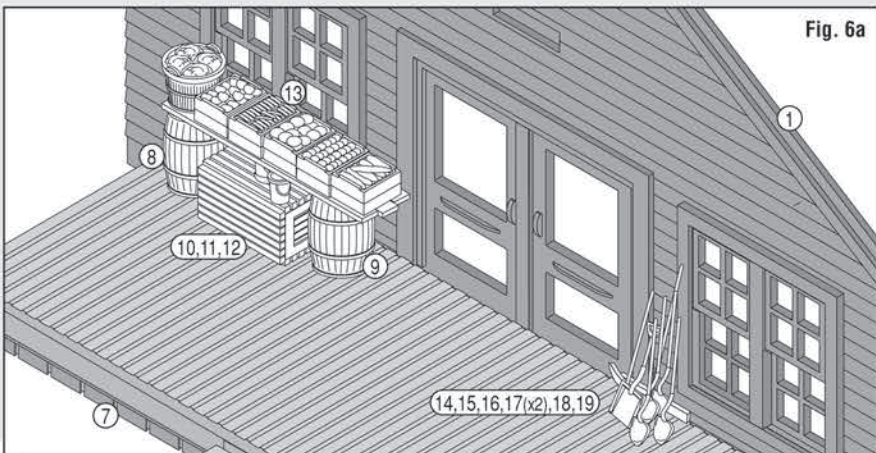


Fig. 6a



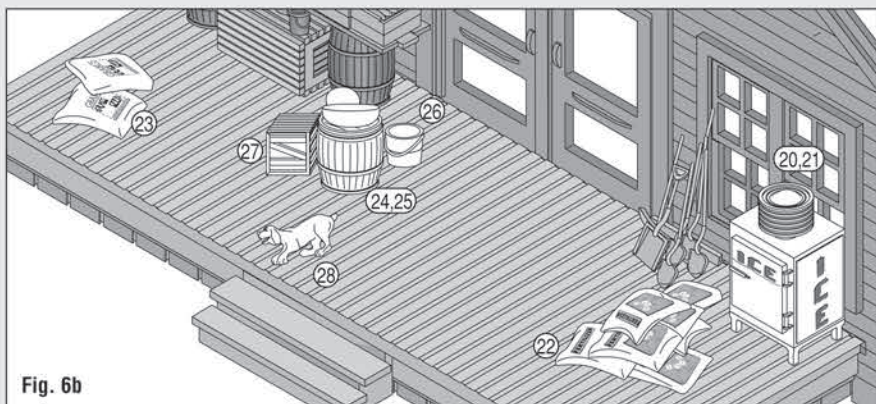


Fig. 6b

## 6. Front Porch cont.

- Glue Compressor (20) to Ice Machine (21) and Melons (25) to Half Barrel (24).
- Install Ice Machine Assembly (20,21), Half Barrel Assembly (24,25), Bucket (26), Small Crate (27), 2-Sacks (23), Dog (28) and Pile of Sacks (22) (Fig. 6b).
- Glue Porch Ceiling (30) to Porch Roof (31) (Fig. 6c).
- Install Porch Posts w/ Signs (29) on Porch, then attach Porch Roof Assembly (30,31) (Fig. 6d).
- Add Store Sign (32) (Fig. 6d).

Fig. 6c

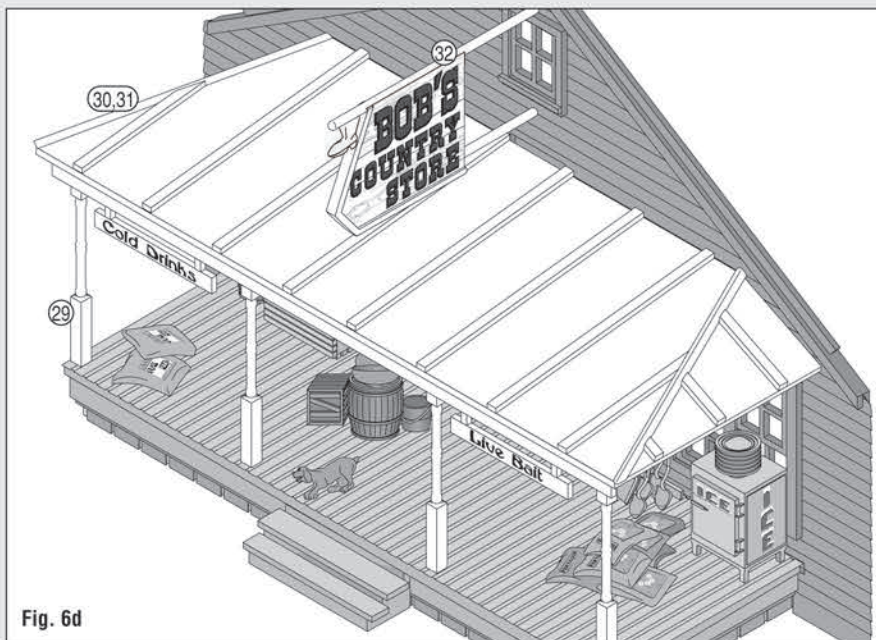
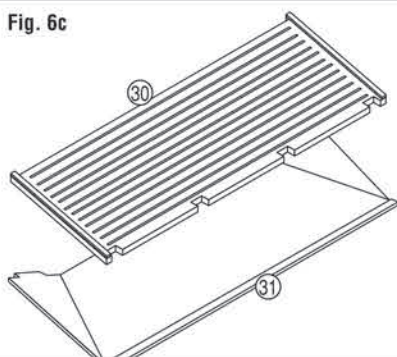
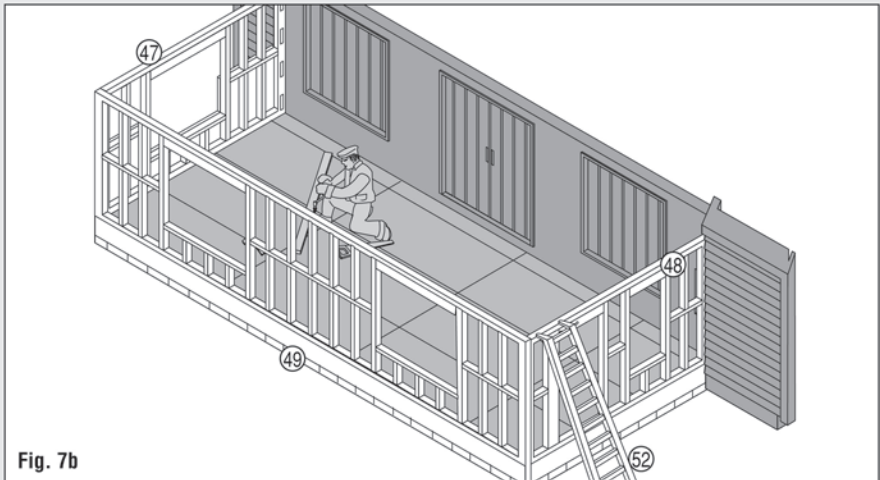
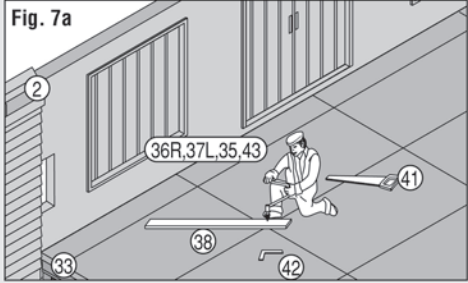


Fig. 6d

## 7. Expansion

- Snap Expansion Flooring (33) to Wall (2) and apply glue along inside seams and tabs.
- Glue Right Arm (36R) and Left Arm (37L) to Kneeling Man (35), then attach Hand Drill (43) to Hands (Fig. 7a).
- Install Board (38), L-Square (42), Saw (41) and Kneeling Man Assembly (36R,37L,35,43) (Fig. 7a).



- Glue Left-side Expansion Frame (47) and Right-side Expansion Frame (48) to Expansion Flooring, then add Front Expansion Wall (49) and Ladder (52) (Fig. 7b).
- Glue Expansion Trusses x4 (53) to Expansion Walls (47) and (48). Make sure notches for Roofing Board (55) align along same side. Glue Extra Boards x2 (54) and Roofing Board (55) in place. (Fig. 7c)
- After assembly, place the following Details where desired. See box for ideas. Glue Saw (44) to hand of Standing Man (35). Glue Board (40) to Saw Horses x2 (39). Glue Saw (46) to Crate (45) (Fig. 7d).
- Place Door Box (50), Window Box (51), Extra Trusses (90), Window Boxes x2 (91) and Window Box (92) where desired on layout.

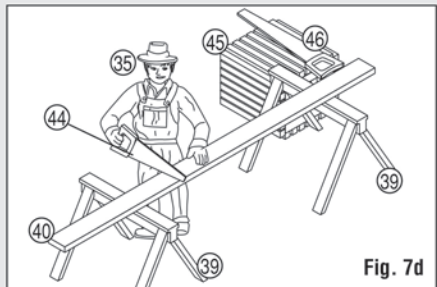
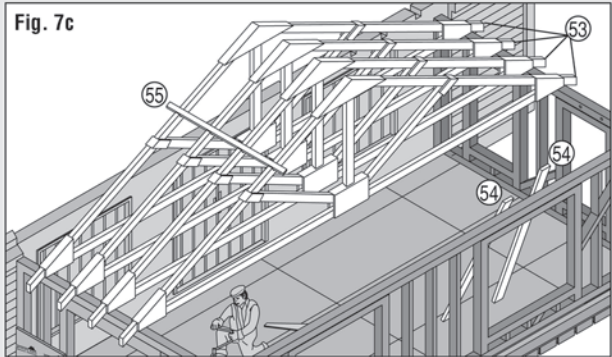
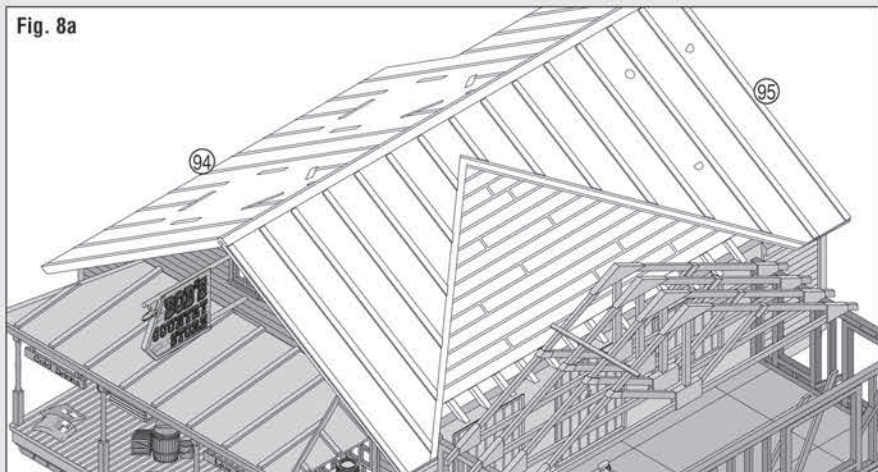




Fig. 8a



## 8. Roof

- Glue Roof Panel 95 into groove on Roof Panel 94, then glue to Building (Fig. 8a).
- Glue Dormer Windows x2 (56) and Dormer Roofing x2 (57) to Roof (Fig. 8b).
- Glue Support Beam (58) to Roof and Trusses. Add Pipe Vent (59), Top Electric Conduit (60), Chimney (61) and Weather Vane (62). (Fig. 8c)

Fig. 8b

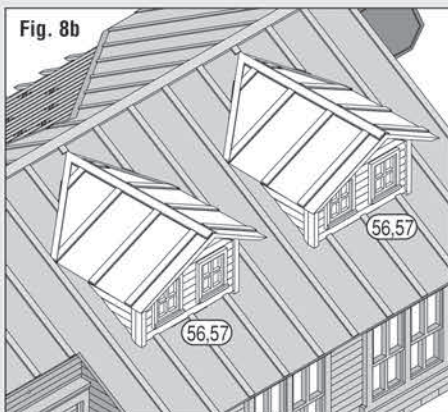
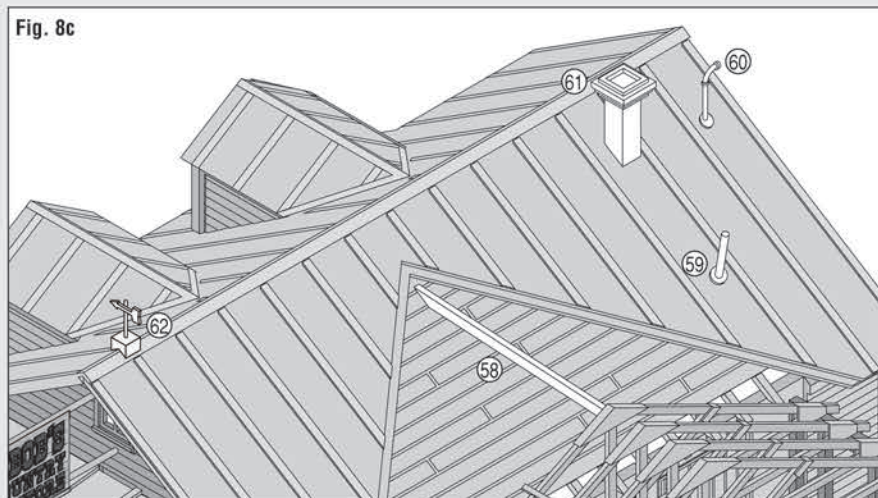


Fig. 8c



## 9. Back

- Attach Electric Meter (63), Electric Conduit (64), Back Placard (65), Vent (66) and Skid (67) to Back Wall (3) (Fig. 9a).
- Glue Kerosene Tank Side (68) to (69), then attach Nozzle (70). Glue to Skid (67). (Fig. 9b)
- Assemble Back Stairs in numerical order (73, 74, 75, 76, 77 and 78), then glue in place (Fig. 9c).
- Glue Propane Tank (71) to (72), then glue to Stair Assembly (Fig. 9d).

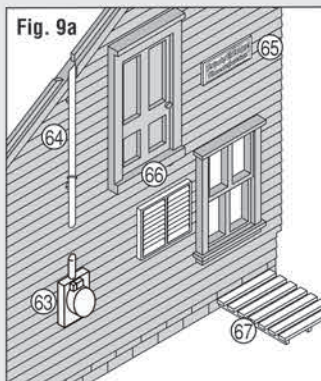


Fig. 9a

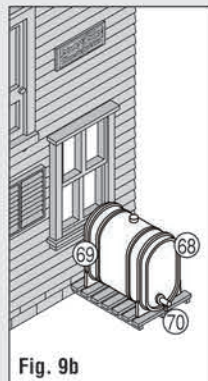


Fig. 9b

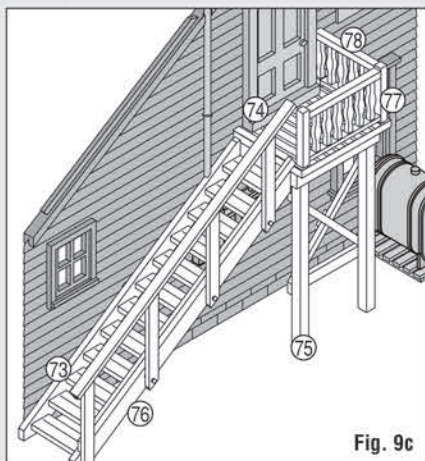


Fig. 9c

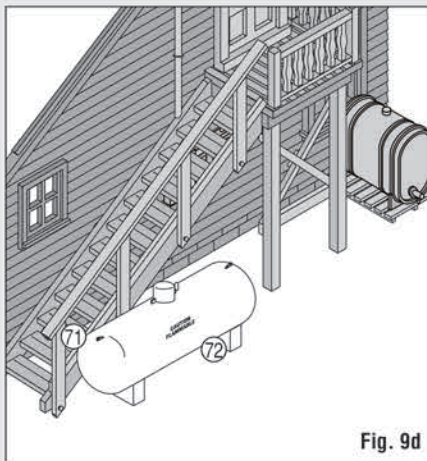


Fig. 9d

## 10. Back Dock

- Install Back Dock (79) in place on Walls (4) and (5) (Fig. 10a).
- Glue Wheels x2 (82) to Handcart (81) and Dumpster Front (83) to Dumpster Frame (84).
- Glue Handcart Assembly (81,82), Dumpster Assembly (83,84) and Barrel (80) in place on Dock (Fig. 10b).

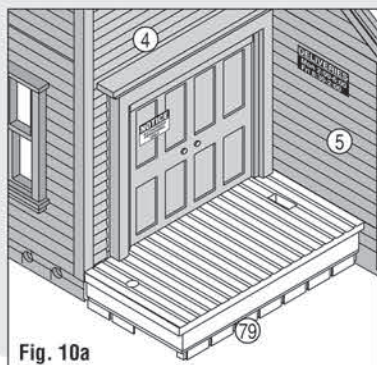


Fig. 10a

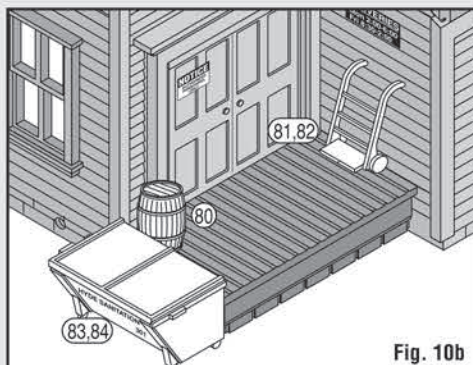


Fig. 10b



## 11. Left Side

- Brush white glue heavily on all sides of branches of Plant (86). While glue is wet, dip into bag of Turf, making sure all sides are well coated. Let dry.
- Glue Placard (87), Placard (88) and Hose (89) (Fig. 11a).
- Glue Plant (86) to Trellis (85), then glue Assembly to Wall (Fig. 11a).

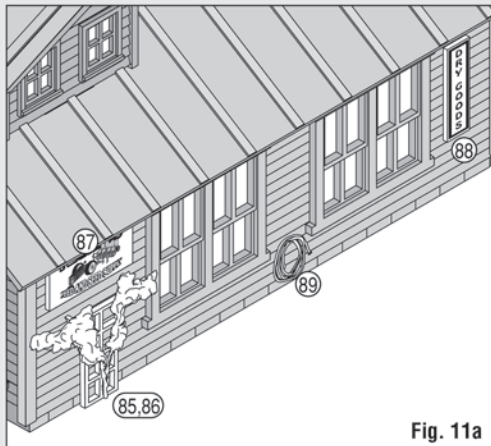


Fig. 11a

## 12. Blackout Paper

Blackout Paper creates the illusion of occupation.

- Cut one sheet of Blackout Paper measuring  $9\frac{3}{4}'' \times 2\frac{3}{8}''$  and another measuring  $10'' \times 2\frac{3}{8}''$ .
- Place sheets on top of each other and cut a notch half-way up (Fig. 12a). Assemble and insert into Building diagonally (Fig. 12b).

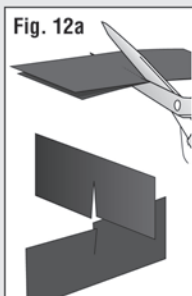


Fig. 12a

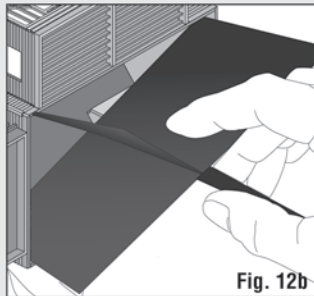


Fig. 12b

## Tips and Techniques

### Lighting

Country Store Expansion has a lighting raceway and generic light socket. To reduce glare, paint interior walls and underside of roof a flat, earth-tone shade.

### Painting

**Airbrush or Hand-brush** Use enamel (solvent-based) or acrylic (water-soluble) flat finish paint.

**Aerosol** Use flat finish spray paint.

### Weathering Techniques

**Mortar Wash** Create the look of brick mortar or add a weathered look (formula follows). Lay building flat so wash spreads evenly. Using a paintbrush, dab on small amounts of Mortar Wash until desired look is achieved. Sponge off excess.

**Formula:** Mix 1-part acrylic paint (color suggestion: concrete or aged concrete), 12-parts rubbing alcohol, 8-parts water and 1 drop liquid dish soap.

**Airbrush** Spray thinned flat black paint lightly onto select areas (color suggestion: grimy black). Add more where discoloration occurs naturally (near windows, roof details, etc.).

**Chalk** Rub a dark color of pastel chalk on sandpaper to create chalk dust (color suggestion: gray, black, brown, etc.). Using a paintbrush, dab chalk dust where discoloration can occur.

**Decals** Age Decals by scoring and chipping with a hobby knife.



# Look for These Other O Scale Landmark Structures Building Kits at Your Local Hobby Shop



**Lubener's General  
Store PF5890**



**Harrison's  
Hardware PF5891**



**J.W. Cobbler  
PF5892**



**Corner Emporium  
PF5893**



**Deuce's Bike Shop  
PF5895**